

Continue Living Better...
...Safer!



VIDEO PHONE SYSTEMS

DIGITAL DOOR LOCKS



Wireless video
phone



Touch screen



Call divert on
Mobile



Remote door lock
Release function



Intercom between
monitor & handset



Speaker phone



IP VIDEO PHONE SYSTEM **S8M703E / S8PCM03P / S8K8WH**

- Supports 10/100 mbps Network Switch.
- Supports 802.11b/g/n WiFi 2.4Ghz Video Phone Handset.
- Missed Call Image Storage.
- Monitor Dimensions (W x H x D): (205 x 129 x 17)mm.
- Sleek black anodized aluminum finish video door bell.
- Capacitive Touch Back-Lit Call Button.
- HD 720P Resolution with 125° wide angle camera.
- Door Camera Dimensions (WxHxD): (97x147x26)mm.



Crystal clear two
Way hands-free



Touch screen



Remote door lock
Release function



Call divert on
Mobile



Built-in flash Memory
storage -128MB



Night vision



Intercom call
Between monitors



IP VIDEO PHONE SYSTEM **S8M701LP / S8BF04P / S8BF08P**

- Supports industry standard 10/100 mbps POE Network Switch.
- Apartment to Apartment Intercom.
- IP CCTV camera integration - 8 camera.
- Missed Call Image Storage.
- Monitor Dimensions (W x H x D): (220 x 167 x 17)mm.
- Weather Proof Call Module, Back-Lit Call Button.
- HD 720P Resolution with 125° wide angle camera.
- Day & Night IR Illumination.
- Door Camera Dimensions (WxHxD): (155x279x50)mm.



Crystal clear two
Way hands-free



Supports 2 door
Cameras



Remote door lock
Release function



High resolution
Camera with
Ir for night



IP 55 & vandal
Ik07 class video
door bell

ALBA
urmet

Security. Lifestyle. Technology.



VIDEO PHONE SYSTEM **M8E7C**

- Brushed aluminium finish.
- Crisp picture display on 7" high resolution LED display.
- Built-in SMPS power supply.
- Monitor Dimensions (W x H x D): (220 x 160 x 35)mm.
- Zamac die-casted vandal Ik07 class
- Shock resistance for villa's.
- Sleek Design with back-lit call button.
- PIN HOLE Wide angle of view.
- Door Camera Dimensions (WxHxD): (70x154x15)mm.



Built-in flash memory
128 images



32gb SD card
video storage



Night vision



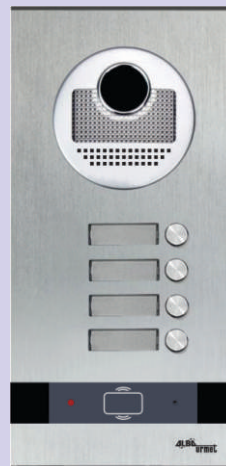
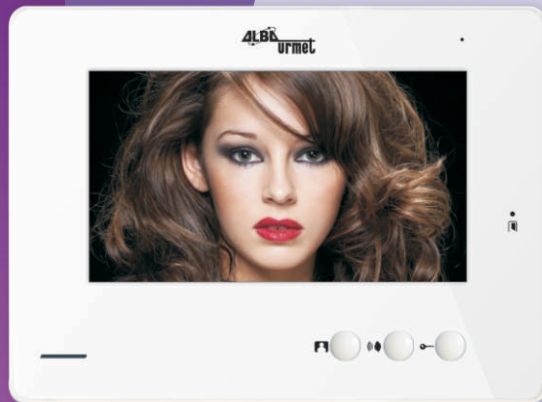
IP 55 call panel



Built-in access
reader



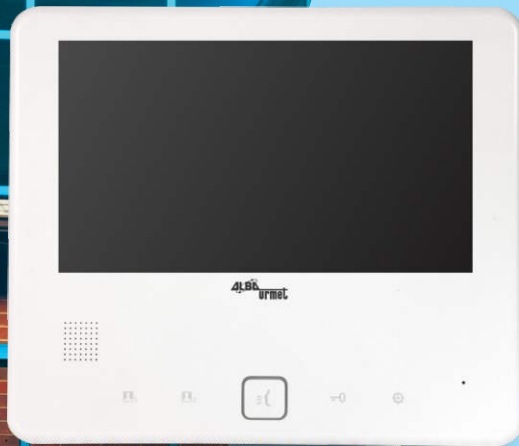
Built-in SMPS
power supply



VIDEO PHONE SYSTEM BUILDER FLOORS

M164C / M168C / E7CM

- Monitor supports Memory with SD card function.
- Crisp picture display on 7" high resolution LED display.
- Built-in SMPS power supply.
- Monitor Dimensions (W x H x D): (220 x 160 x 35)mm.
- Door Panels support 4 or 8 back-lit call buttons.
- Built-in Proximity Access control reader on 4 bell panel.
- IR Illumination for night vision.



VIDEO PHONE SYSTEM

M7B7C

7" Video Phone Systems
Support 2 outdoor camera.

9 Differential Ring Tones.

Call Time 90s.

Feather touch Buttons.

Power source DC 13.5V

Dimensions : (200x170x15)mm.

M7E43CN

4" Video Phone Systems
Support 1 outdoor camera.

9 Differential Ring Tones.

Call Time 90s.

Feather touch Buttons.

Built-in SMPS Power supply

Dimensions : (135x206x30)mm.

Door Camera Brushed aluminum finish.

Sleek Design with back-lit call button.

PIN HOLE Wide angle of view.

Door Camera Dimensions (WxHxD): (70x154x15)mm.



Fingerprint control



Ha/ vdp integration



Auto / manual setting



Night lock function



Smart touch



Low battery function



Code hide function



Intrusion & fire alert

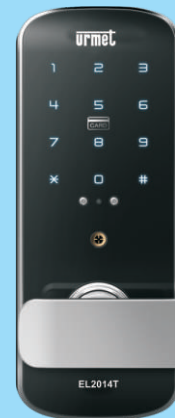
EL2018FP FINGERPRINT LOCK



4 in 1 Access mode



EL2014T DIGITAL DOOR LOCK



EL2020 ELECTRONIC DOOR LOCK

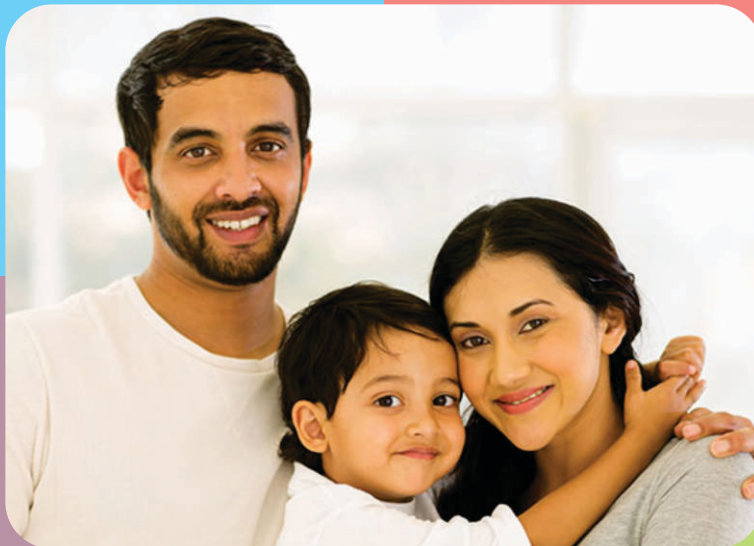
Electronic Door Lock for In-swing / Out-swing doors.

- Designed for flush mount Wooden, Aluminium & Steel Doors.
- Stainless Steel Finish, with Brass Cylinders
- Double cylinder for night latch feature with 3 keys.
- Operation time : Requires power to open, 0.5 sec at 12 vac to 18 vac.



Alba Urmet Tailor-made Systems

With three decades of experience in providing solution for Automation & Security, we present new opportunities to create ultimate experience with Internet of Things to enhance your life by building an eco system around interconnected Smart devices that help you in optimizing operations, analyzing usage, monitoring energy consumption, securing your assets & providing control of your environment.



AUTHORISED DEALER



Security. Lifestyle. Technology.

www.albaurmet.com